



Aldwinckles Yard, Market Harborough, LE16 7AL



Part of
**SHELDON
BOSLEY
KNIGHT**
LAND AND
PROPERTY
PROFESSIONALS

Property Description

A charming end mews cottage set within a small courtyard development in the heart of Market Harborough's town centre. The accommodation downstairs is open-plan and comprises of a sitting room/kitchen/diner, WC and a storage cupboard. Stairs leading to the landing with two double bedrooms and a shower room. Outside there is a shared courtyard and one allocated parking space. Gas central heating. No pets. EPC rated D. Council Tax banded B. Rent £815pcm. Deposit £940. Unfurnished. Available start of October on a fixed term six month contract with the option to renew.

Important Tenancy Information:

- Holding deposit: 1 week's rent
- Full deposit: 5 weeks rent
- In-person viewing required before application is issued
- Holding deposit applied to first month's rent on successful referencing

Non-refundable Criteria:

- False/misleading information provided
- Failure to complete/sign agreement within 14 days
- Failing Right to Rent Checks
- Withdrawal from process after application submission

Information regarding tenant fees is available on our website. If you have any questions please contact the office directly.



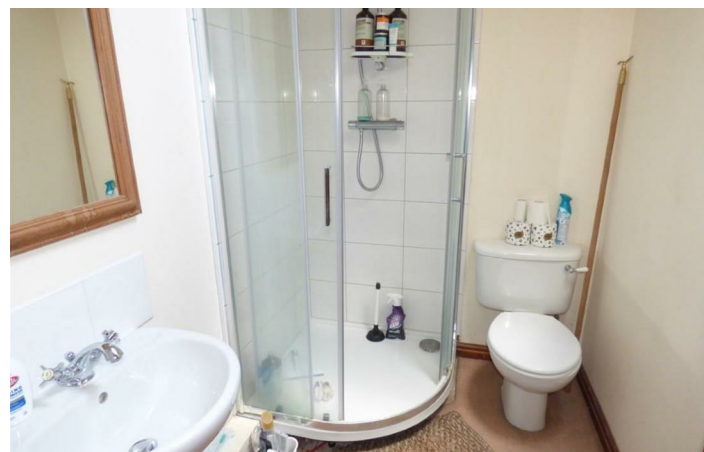
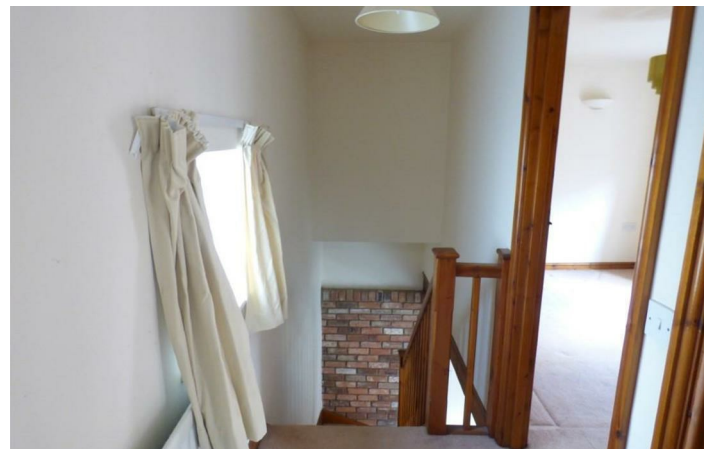


Key Features

- End mews cottage
- Open plan
loung/kitchen.dining room
- Downstairs WC
- Two bedrooms
- Shower Room
- Off road parking
- EPC D / Council Tax B
- Unfurnished
- Rent £815pcm. Deposit £940
- Available start of October on
a fixed term six month
contract with the option to
renew

PCM
£815 PCM





EPC Rating - D

Tenure -

Council Tax Band - B

Local Authority
Harborough District Council

We routinely refer clients to both our recommended Legal Firm and a panel of Financial Services Providers. It is your decision whether you choose to deal with these companies. In making that decision, you should know that we receive a referral fee



To view this property please contact our Market Harborough office on 01858 431315



Part of
**SHELDON
BOSLEY
KNIGHT**
LAND AND
PROPERTY
PROFESSIONALS